

GAF RHINO BOND® SYSTEM

Installing smooth TPO with the RhinoBond® Attachment System offers several benefits, including:

- A fast and easy installation
- Smaller crews and install time, with up to 50% faster installation by adding a second machine
- Quick dry-in, as membrane seams can be welded before RhinoBond® Plates are bonded

RhinoBond® Attachment Systems are eligible for the same warranties as fully adhered systems, and can also be installed:

- In a wide variety of temperatures
- Without waiting for cure time, fumes, mess, empty pails, or VOCs from traditional adhesives

In addition, RhinoBond® Attachment Systems have advantages over traditional mechanically attached systems, including:

- No half sheets and less seams
- Longer warranties
- No fastener penetrations in the field or seams of the membrane
- Less flutter with optimized attachment across the entire sheet



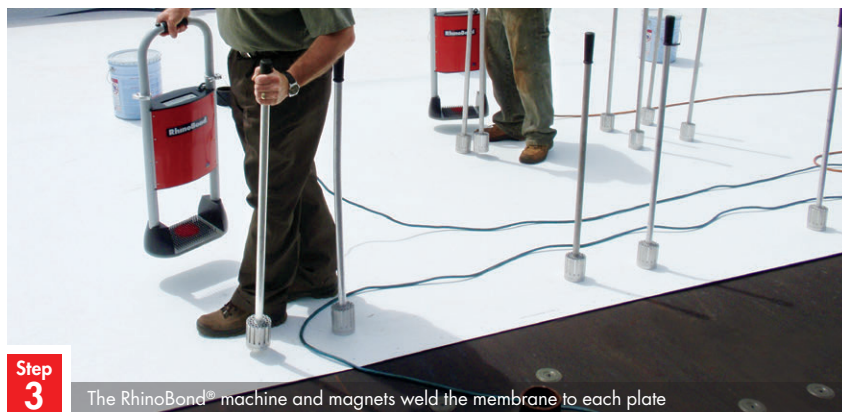
Step
1

RhinoBond® plates are drilled through the insulation



Step
2

Membrane is rolled in and welded at the seams



Step
3

The RhinoBond® machine and magnets weld the membrane to each plate

*RhinoBond® is a registered trademark of OMG.



For more information on the RhinoBond® Attachment System, contact your local GAF Representative or visit gaf.com/TPOInstall.

GAF EVERGUARD
TPO

EVERGUARD® TPO

Prefabricated Accessories

- Watertight • Consistent, field-tested quality • Proven to reduce total installed cost by up to 12%*

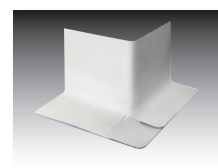


Walkway Roll

Heat welds directly to TPO membrane or installed with seam tape; available in gray and yellow

Corner Curb Wrap

Four standard sizes to flash curbs that are 24", 36", 48", and 60" in size



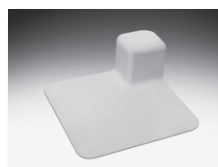
Pourable Sealer Pocket

Structural foundation for EverGuard® Pourable Sealant



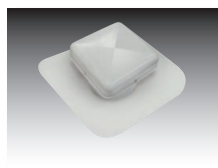
Fluted Corner

For use in flashing outside corners of base and curb flashings



Universal Corner

Accommodates both inside and outside corners of base and curb flashings



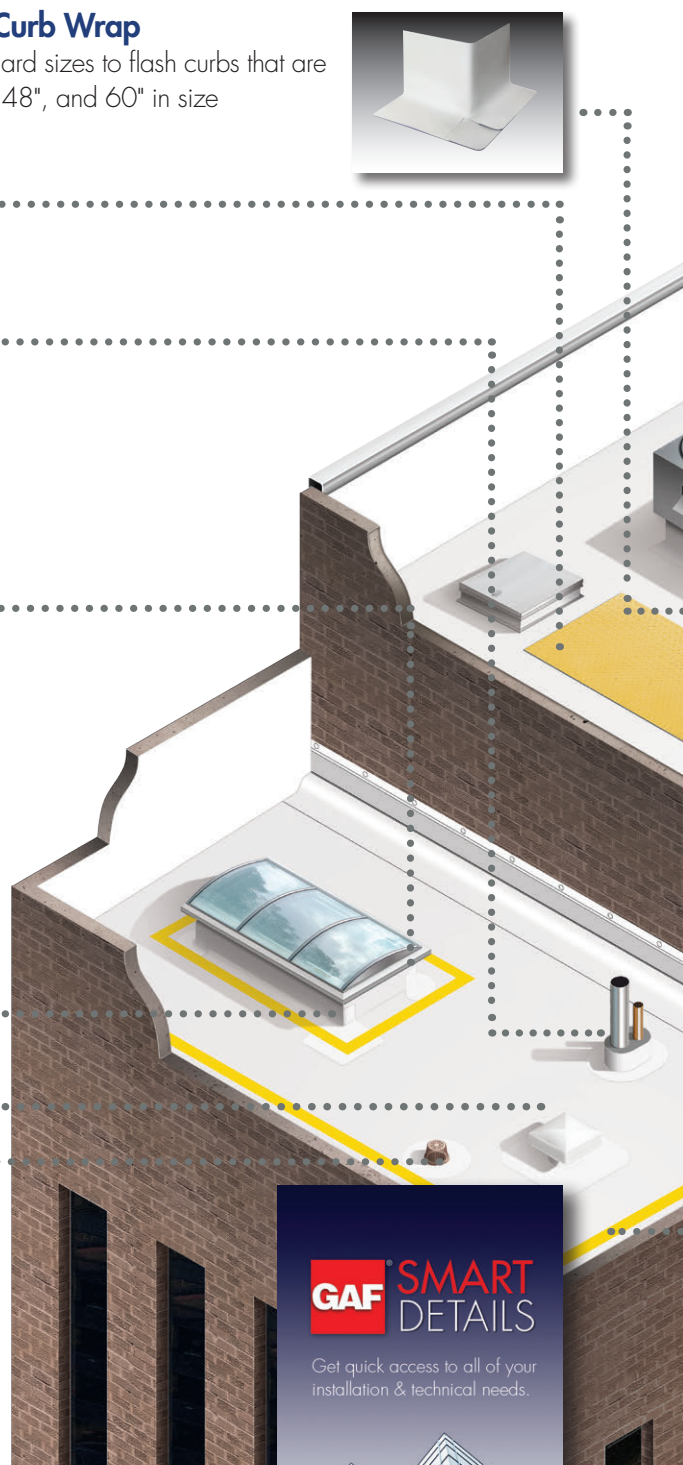
Vent

Limits air flow to one direction, avoiding moisture buildup



Coated SPEEDTITE™ Drain

TPO or PVC-coated flange for direct hot-air welding of TPO or PVC roof membranes



GAF SMART
DETAILS

Get quick access to all of your
installation & technical needs.



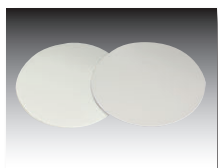
Get quick access to all of your installation and technical needs at
gaf.com/smartdetails.



*Compared to GAF estimate to field-fabricate flashing details.

T-Joint Cover Patches

Conforming seal for use over T-joints in 60 and 80 mil membrane applications



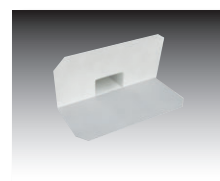
Inside Corner

Manufactured to accommodate inside corners of base and curb flashings



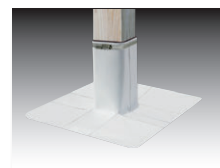
Scupper

TPO can be heat welded to the scupper for a strong, secure installation



Square Tube Wrap

Tube wraps are split with overlap to wrap around square or rectangular tubing; ensures a solid weld



Preformed Split Pipe Boot

Three standard sizes accommodate most pipes and conduits



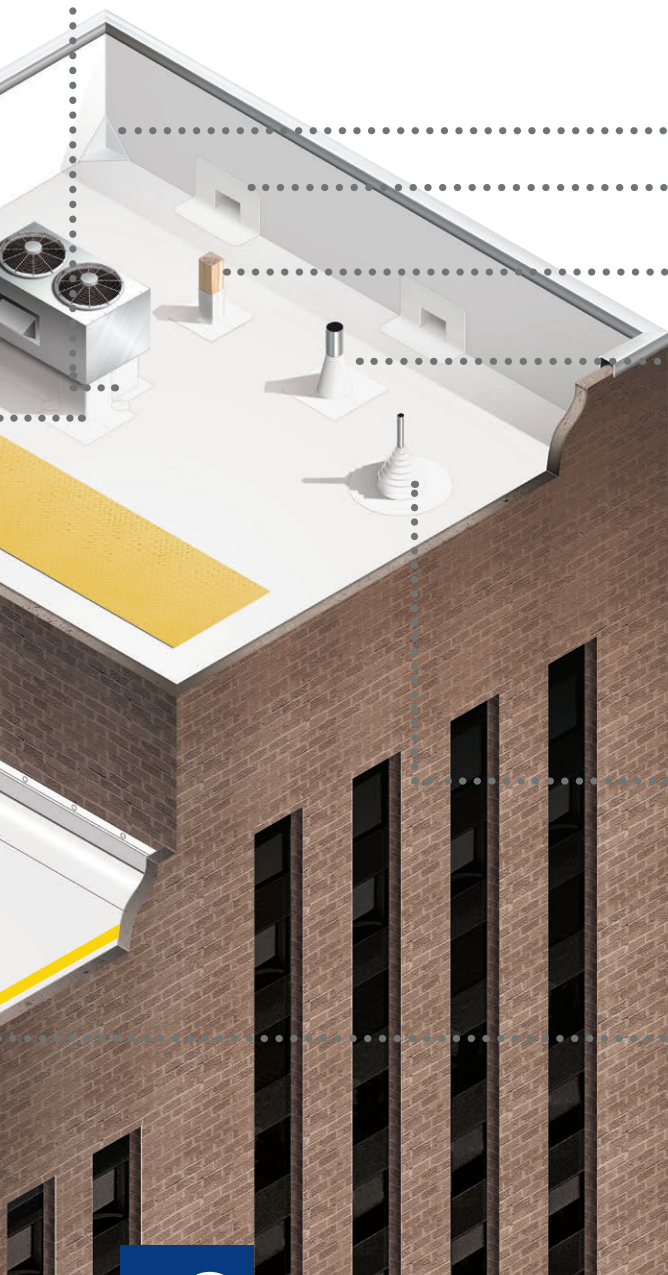
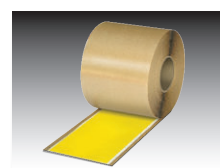
Preformed Vent Boot

Accommodates most common pipes and conduits from 1" to 6"



Yellow Safety Tape

Provides a warning to take caution around potential roof hazards



For more information on TPO accessories, contact your local GAF Representative or visit gaf.com/TPOAccessories.

GAF **EVERGUARD**
TPO